

THE WONDER UNIT

By Jerry O'Connell and PropDog



The Wonder Unit

After thinking and playing with the Confabulation effect I came to the conclusion that if it was simplified it would allow the effect to be used in a table hopping environment.

I decided that I would only use folded letters, no envelope or carbon paper and only write the answers to my questions directly onto the folded letter. I then palm the Wonder Unit straight into the wallet and remove only the letter from the Wonder Unit which will have the answers, clearly written on it, and feel how smooth and easy it comes out of the wallet.

I've considered the four different methods usually used over the years.

1 = Carbon paper in a sealed envelope. I've eliminated the carbon paper, a lot of work to set up, it also needs an envelope, plus the writing stands out.

2 = An open window in the envelope. I'm not using this because it's more work to make the envelope, cut out the window and then it needs opening.

3 = Double writing. I'm not writing it twice either, in my opinion writing onto the letter and onto a piece of paper is not really necessary, if some of you feel more comfortable with this method then carry on and use it.

4 = Single writing. This is the method I've chosen to use, there's no fuss, and it works fine.

The Wonder Unit is 95mm in length and narrower than a poker card it's a good platform to write on and it will enter my wallets easily.

Remove the letter from the zip compartment and have the letter read out. You can remove the letter from the open hand using the No-Palm feature.

Envelope Template

I've not fitted any envelope, I've only fitted the folded letter, to show how it looks and handles using my simple approach.

You may decide to use an envelope with a window or with some carbon paper, so I've also included a small envelope cutting pattern. Cut out a window if you wish. You may wish to double write or even agree with me that single writing is the easiest way for table hopping. Whichever of the methods you choose will of course be your own thought out decision.

The A6 portrait view letter, you get 4 letters from an A6 sheet

Fold the letter off centre to fit proud of the side edge, it's held in place by the two edge tabs, I've also Cut out grip spaces on the flap and the base allowing you to remove the letter by feel, it looks far more natural than looking into the zip compartment to find the grip position.

Opening & Closing

Hold the Wonder Unit in the left hand, open the flap and proceed to write down the answers to the questions. The L/lower part of the thumb hides the grip space on the flap when open. As you close the flap grip the loose piece of paper and give the impression that it is being torn out as the flap is closed. The movements now must be natural as you casually exchange the Wonder Unit and the paper to different hands.

The paper in the R/hand is taken by the L/hand, gripped between the thumb and first finger. The closed Wonder Unit in the L/hand is removed by the R/hand, gripped between the fingers on top and thumb underneath. Casually move the Wonder Unit to the jacket pocket and insert it into the wallet, folded end enters the wallet first, if you are using my wallets. You may need to turn it over if using a Caps type wallet.

This is the moment in your performance to read out the answers, written or from memory. Remove the letter from the wallet and having it read out is the final stage.

The letter must be handwritten by you so it will match your writing when seen and read out. Folding it off centre makes it proud of the Wonder Unit allowing you to gain a better grip.

I believe writing directly onto the letter is perfect for table hopping. Have a quantity of previously prepared folded letters ready for a quick reset between tables makes this ideal for table work.

The sample letter story works but maybe you will think of your own story. The narrow strip of material on the bottom of the inside of the flap is there to hold a piece of paper, size 52mm x 83mm, either double write or leave it blank and use your memory.

The Wonder Unit can not be used when a sealed envelope or an ID case is fitted in my wallets.

The Wonder Unit has been slightly modified to perform the Predicta effect too. If you don't know PREDICTA by Gilbert Raimond here it is.

The Effect

Ask the spectators to choose any four numbers between 0-100 the numbers on the lottery ticket are all digital 88 made up with 7 white dashes on a black background, check out the sample.

Change the numbers with a black sharpie pen as they are chosen as well as writing them on the release backing paper. Pull this paper off and seal the sticky clear film down, completes the effect. Place the Wonder Unit into the wallet, all is done and ready.

Remove a lottery ticket from the wallet and ask the spectator to scratch the surface squares to reveal the previous chosen numbers underneath. I've added an extra tab to the flap and in union with the lower tab it keeps the upper and lower sections of the Predicta ticket separated, when the flap opens the Predicta ticket opens too, making your performance movements look natural too.

With a computer you can print four A6 portrait letters from a single A4. This adds another use for the Wonder Unit with my two JOL wallets.

□



This picture shows the folded A6 letter fitted. Note the paper is folded so that it fits proud and covers the cut out so that you can get a grip on the letter when the flap is closed. The whole Wonder Unit is designed to fit into all my wallets so that you can remove the paper item from the zip compartment leaving the unit (pad) safely unseen inside the wallet.

□



This picture shows the Predicta card fitted into the Wonder Unit. As the flap is opened the white sheet is lifted up by the tab on the top flap lifting the top sheet from the lottery ticket base so that you are able to change the 88 into any other number requested. When completed pull the white paper off to allow the sticky clear film to seal the numbers and complete the lottery ticket.

The Wonder Unit Letter Instructions

The Letter is a folded A6 portrait. Start with an A4 portrait, give it two columns and insert the letter below four times on the A4 sheet cut then and fold them.

Below is an A 6 Sample letter.

Date

Hello Everyone,

*While sitting in my living room today,
before the show, three thoughts came into my
mind. I wrote them down.*

My first thought was

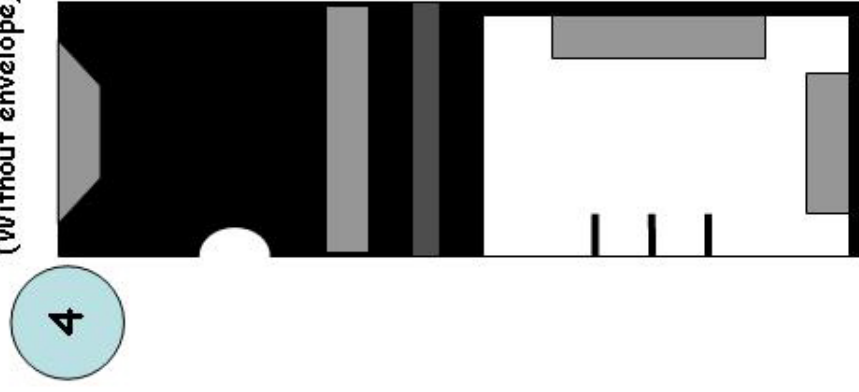
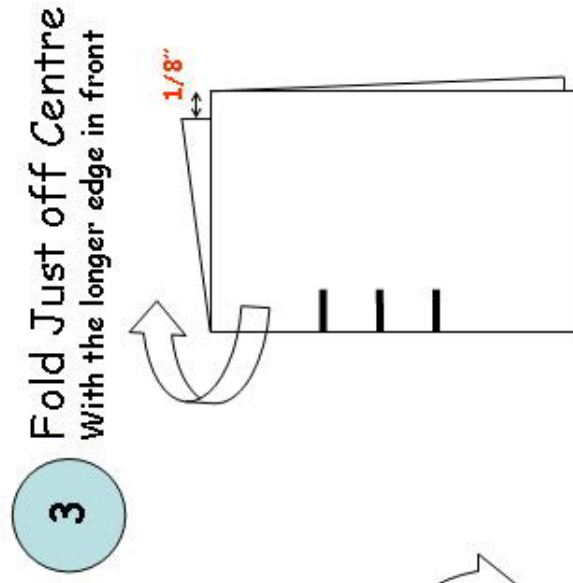
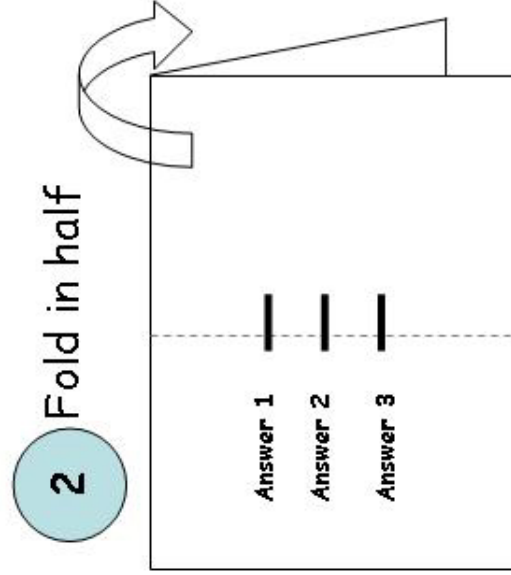
My next thought was

My last thought was

Jerry O'Connell

1

<p>HAND WRITE YOUR PREDICTION REVEAL IN THIS PART OF THE SHEET</p>	<p>Answer 1 —</p> <p>Answer 2 —</p> <p>Answer 3 —</p>
--	---



Sheet installed in
wonder unit
(Without envelope)

Loading the wonder unit