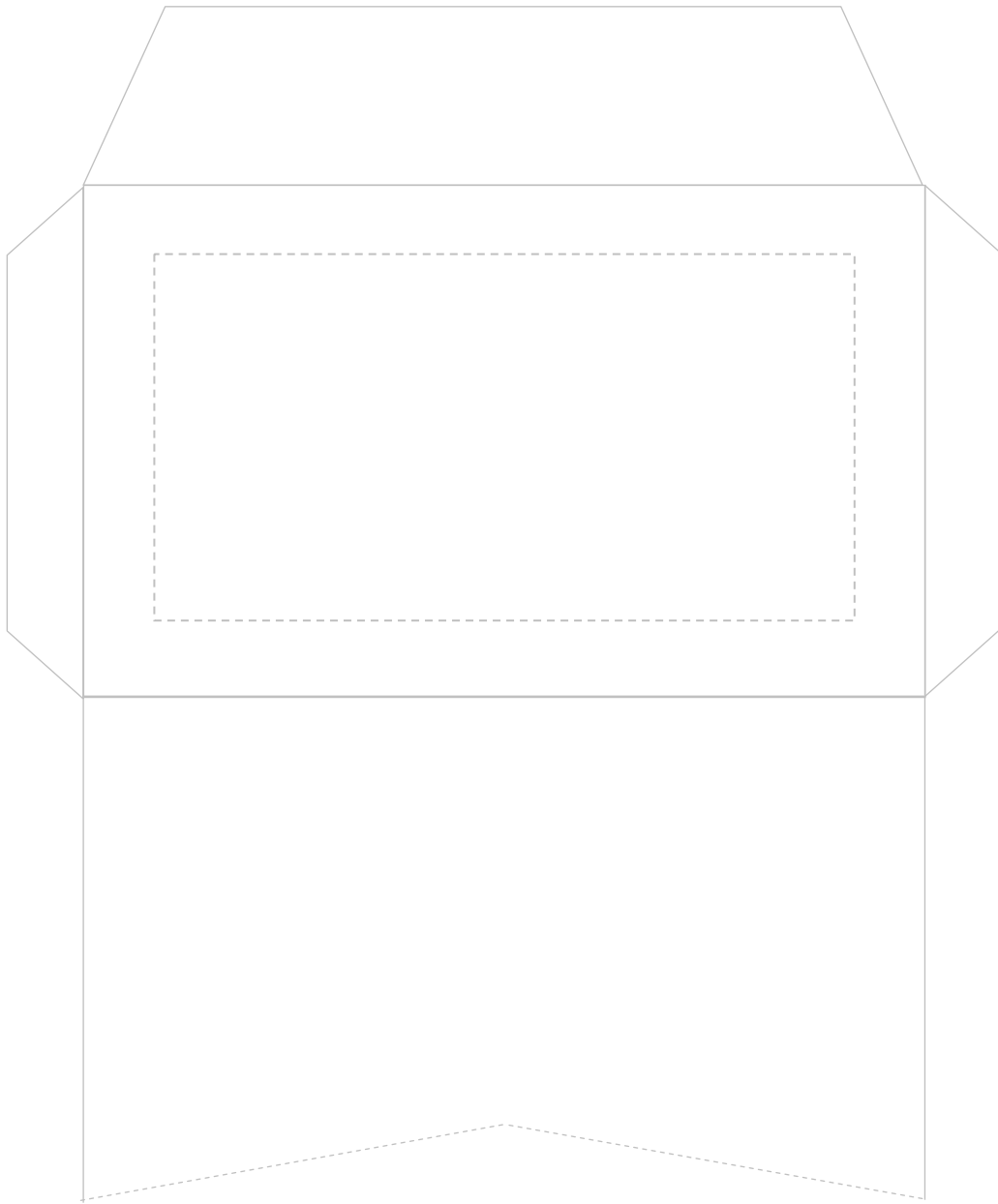


The small Envelope Template

Check the size is correct before using
Simply print out in standard A4 format



These envelopes have been designed for the JOL range of wallets ONLY.
I originally developed these envelope plans for my own personal use but
Jerry was so impressed with the simplicity of the designs, he kindly asked
if I would allow him to publish them on his website.

Use them with my compliments.

Michael Carr AIMC

www.michael-carr.co.uk